

# 2021 HKDSE S6/6 MOCK EXAMINATION MATHEMATICS

## (Compulsory Part)

### MathCQ Report (comparative) on School's Performance

School: Sample Secondary School

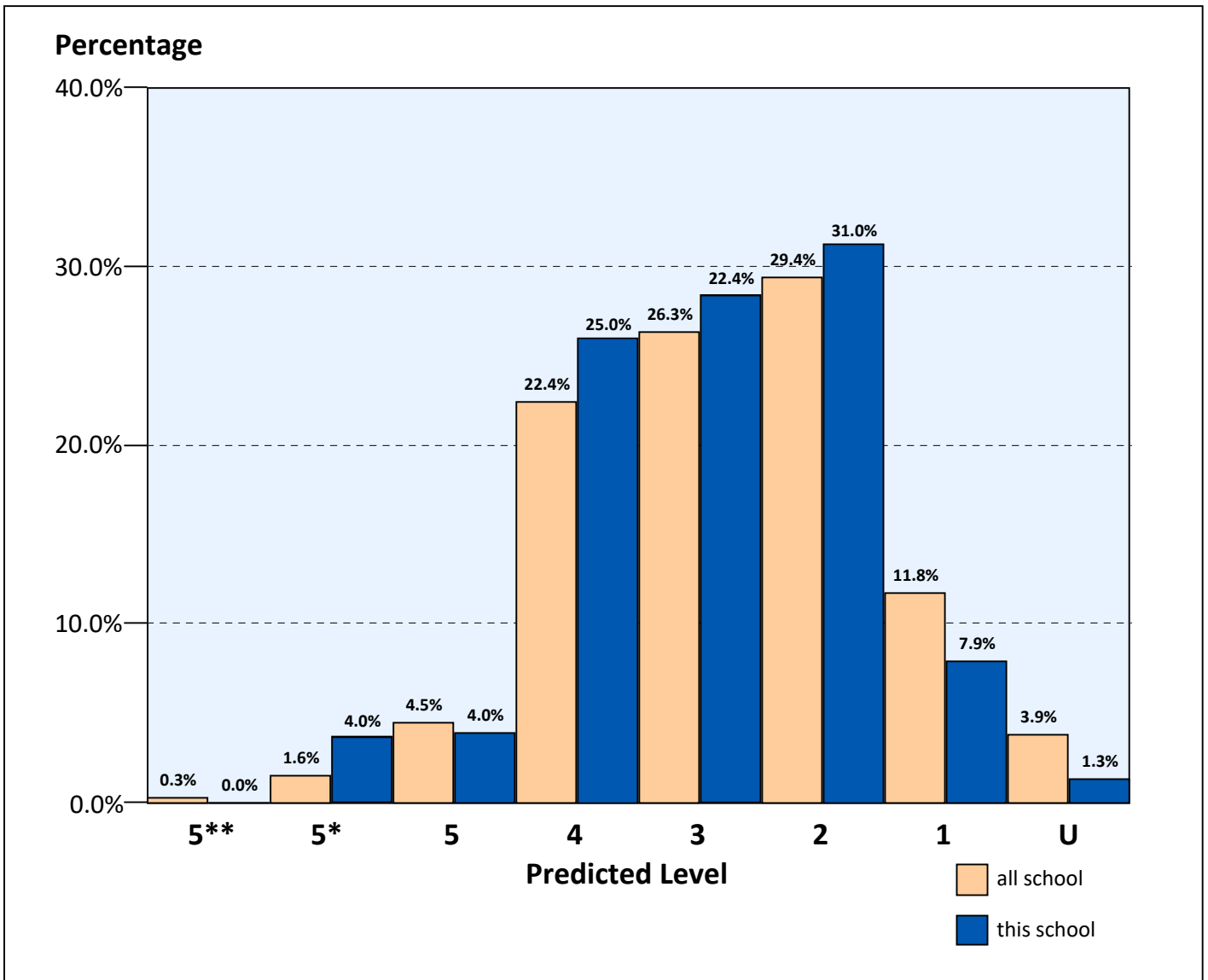
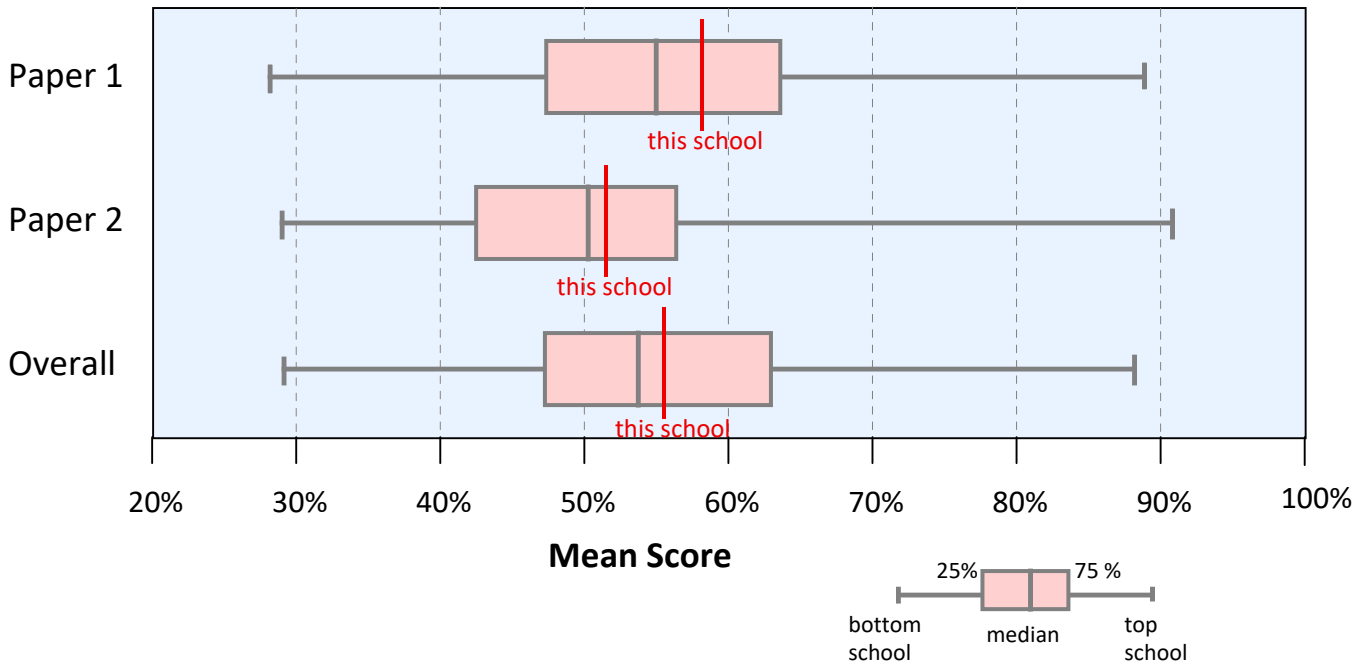
Mock Paper Level: M

		Mean of all schools	Mean of this school
Junior Topics	Paper 1	77.6%	80.5%
	Paper 2	55.3%	58.6%
	Overall	68.6%	70.0%
Senior Topics	Paper 1	39.4%	42.3%
	Paper 2	43.1%	50.0%
	Overall	40.6%	45.1%
Number and Algebra Strand	Paper 1	56.3%	58.9%
	Paper 2	55.8%	60.7%
	Overall	56.2%	55.2%
Measure, Shape and Space Strand	Paper 1	41.8%	46.2%
	Paper 2	40.2%	40.6%
	Overall	41.2%	43.4%
Data Handling Strand	Paper 1	64.3%	59.3%
	Paper 2	51.3%	52.3%
	Overall	59.8%	61.5%
Paper 1	Section A1	83.9%	86.6%
	Section A2	45.4%	49.2%
	Section B	29.3%	32.2%
	Total*	53.4%	56.0%
Paper 2	Section A	53.0%	52.2%
	Section B	39.4%	42.89
	Total*	48.9%	50.1%
Overall*		51.9%	54.9%

Remark: As different schools may use different questions, the overall score is normalized before making comparison among schools. The marks shown in \* are normalized marks.

Overall Scores (%)	Predicted Level	All schools	This school
92 - 100	5**	24 (0.3%)	0 (0.0%)
85 - 91.99	5*	152 (1.6%)	3 (4.0%)
78 - 84.99	5	437 (4.5%)	3 (4.0%)
62 - 77.99	4	2197 (22.4%)	17 (22.4%)
49 - 61.99	3	2578 (26.3%)	17 (22.4%)
33 - 48.99	2	2875 (29.4%)	26 (32.9%)
22 - 32.99	1	1152 (11.8%)	5 (7.9%)
0 - 21.99	U	377 (3.9%)	1 (1.3%)
Total		9792	72

# Whole Paper Comparison with All Schools



# Item Analysis Report

## Paper 1

Question	All schools		This schools	
	% score (%)		% score (%)	
1	94.0		96.5	
2	94.8		97.4	
3	88.2		94.4	
4	65.3		59.3	
5	86.7		87.7	
6	96.1		98.1	
7	76.7		82.6	
8	85.8		88.8	
9	72.6		77.9	
10	73.5		71.4	

Question	All schools		This schools	
	% score (%)		% score (%)	
11	54.3		52.4	
12	46.9		54.3	
13	23.5		37.3	
14	37.6		39.5	
15	66.6		77.9	
16	35.2		38.7	
17	39.1		40.3	
18	14.5		12.8	
19	12.4		15.7	

## Paper 2

Question	All schools		This schools	
	% score (%)		% score (%)	
1	89.0		94.7	
2	76.2		75.0	
3	81.2		76.3	
4	37.4		29.0	
5	69.0		67.1	
6	81.5		92.1	
7	59.2		59.2	
8	26.2		29.0	
9	77.3		84.2	
10	54.3		65.8	
11	60.0		71.1	
12	50.4		47.4	
13	41.4		32.9	
14	66.2		76.3	
15	58.5		56.6	
16	50.4		51.3	
17	39.3		32.9	
18	32.3		30.3	
19	64.7		68.4	
20	37.6		42.1	
21	34.5		32.9	
22	49.1		50.0	
23	37.8		39.5	
24	41.5		48.7	
25	36.0		42.1	

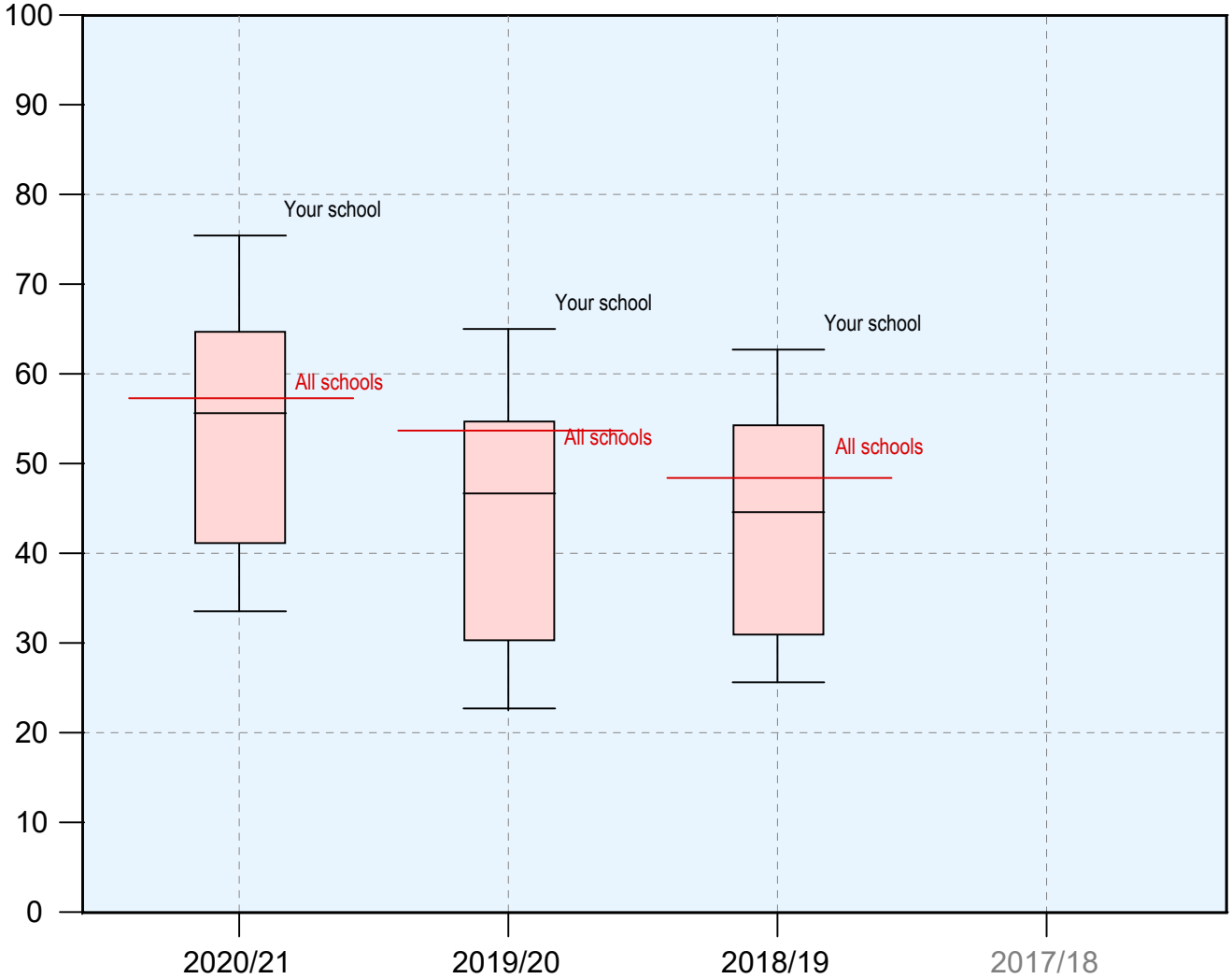
Question	All schools		This schools	
	% score (%)		% score (%)	
26	46.6		44.7	
27	36.7		38.2	
28	55.9		50.0	
29	14.8		14.5	
30	72.9		84.2	
31	48.7		63.2	
32	27.5		39.5	
33	36.4		46.1	
34	19.6		22.4	
35	38.8		36.8	
36	32.1		35.5	
37	34.6		36.8	
38	43.5		42.1	
39	33.0		26.3	
40	28.9		32.9	
41	32.0		29.0	
42	59.2		63.2	
43	52.5		56.6	
44	62.1		64.5	
45	40.8		47.4	

**Remark: The % score of all schools is based on the score of all candidates doing that particular question.**

# School Statistical Report Summary

Number of candidates: 76  
 Average mark:  
 (Full mark = 100)                      53.87

Mark Distribution Chart



<u>Legend</u>		top 10% candidates	
		top 25% candidates	
		median	
		bottom 25% candidates	
Percentile Polygon		bottom 10% candidates	Average mark of all schools

# Report on Topics of Weak Performance for Different Groups/Classes

## Paper 1

Section	Topic	6A	6B	6C	6D						
1A	Laws of Indices										
1A	Formulas										
1A	Percentages										
1A	Equations										
1A	Inequalities										
1A	Polynomials (1)										
1A	Polynomials (2)										
1A	Rate, Ratio and Variations			*							
1A	Mensuration	*									
1A	Rectilinear Figures		*								
1A	Equations of Loci and Circles			*							
1A	Statistics (1)										
1A	Statistics (2)										
1B	More about Graphs of Functions		*	*							
1B	Geometric Sequences		*								
1B	Equations of Circles		*	*							
1B	Trigonometry II		*								
1B	Probability										

Remark: Topics in which mock exam questions of class/group MathCQ below 60% are shown with an asterisk (\*).

# Report on Topics of Weak Performance for Different Groups/Classes

## Paper 2

Section	Topic	6A	6B	6C	6D						
2A	Estimation	*		*							
2A	Percentages										
2A	Mensuration	*	*	*							
2A	Deductive Geometry I Rectilinear Figures		*	*							
2A	Functions and Graphs		*								
2A	Polynomials										
2A	Laws of Indices, Exponential Functions and Logarithmic Functions										
2A	Rate, Ratio and Variation										
2A	Inequalities in One Unknown		*								
2A	Coordinate Geometry I	*									
2A	Deductive Geometry II Circles			*							
2A	Trigonometry I Basic Trigonometry		*								
2A	Trigonometry I Applications of Trigonometry										
2A	More about Graphs of Functions										
2A	Coordinate Geometry II		*	*	*						
2A	Probability										
2A	Sequences			*							
2A	Statistics										
2B	Number Systems										
2B	Functions and Graphs										
2B	Laws of Indices, Exponential Functions and Logarithmic Functions										
2B	Deductive Geometry II Circles				*						
2B	Trigonometry I Basic Trigonometry		*								
2B	Trigonometry II Applications of Trigonometry		*								
2B	Coordinate Geometry II										
2B	Permutation and Combination		*								
2B	Probability		*	*							
2B	Linear Programming										
2B	Sequences		*		*						
2B	Statistics		*								

Remark: Topics in which mock exam questions of class/group MathCQ below 60% are shown with an asterisk (\*).